



**University of Kentucky**

---

**From the Selected Works of Julene L. Jones**

---

2013

# Changing locations using GDC, Pick and Scan

Julene L. Jones, *University of Kentucky*



Available at: <https://works.bepress.com/julene/16/>

## Change location using GDC and Pick and Scan

(Voyager version 8.2)

I use an Access query to obtain a list of MFHDs to import into Global Data change. You can also use GDC to scan your database, if you prefer. I often find other problems in our data during these types of jobs, so for me, it's easier to use Access for this.

If it helps, here's the SQL query for the current project I'm working on: moving all the A classed materials from the location "yl,4" to the location "yl,3"

So, I'm looking for all A LC call numbers in the location "yl,4":

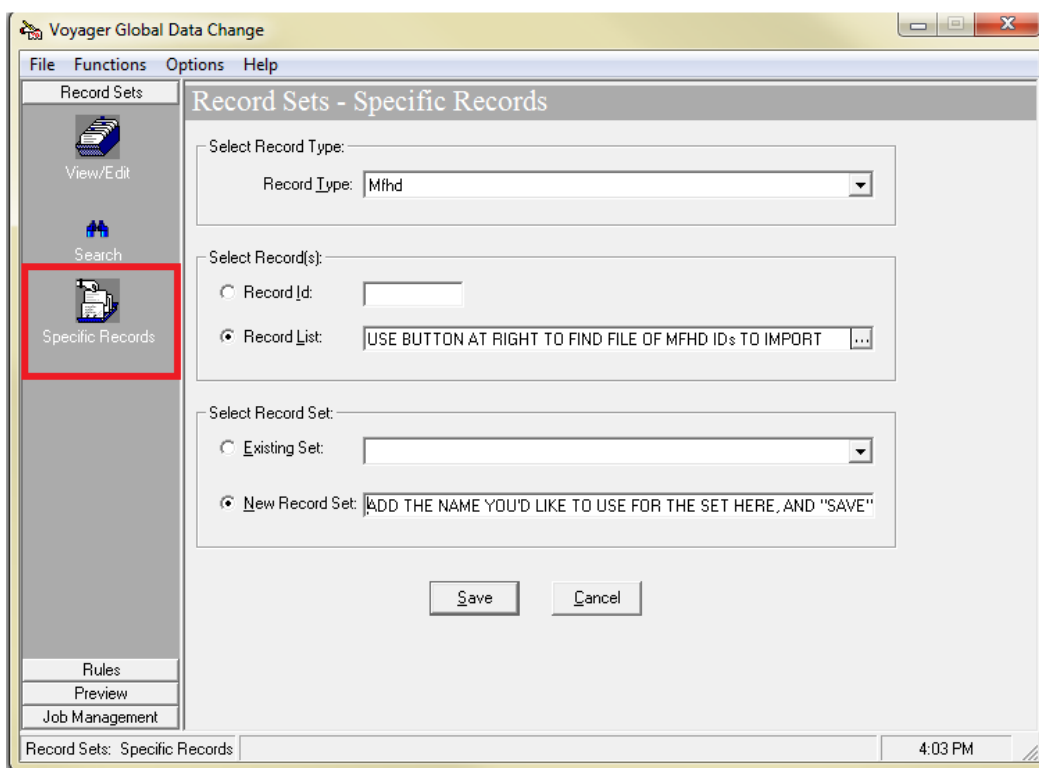
```
SELECT BIB_TEXT.BIB_ID, MFHD_MASTER.NORMALIZED_CALL_NO, MFHD_MASTER.DISPLAY_CALL_NO,
BIB_MASTER.SUPPRESS_IN_OPAC, BIB_TEXT.AUTHOR, BIB_TEXT.TITLE, BIB_TEXT.BIB_FORMAT,
BIB_TEXT.BEGIN_PUB_DATE, BIB_TEXT.END_PUB_DATE, LOCATION.LOCATION_CODE INTO [everything A_D call number
in child dev]

FROM BIB_MASTER INNER JOIN ((MFHD_MASTER INNER JOIN LOCATION ON MFHD_MASTER.LOCATION_ID =
LOCATION.LOCATION_ID) INNER JOIN (BIB_TEXT INNER JOIN BIB_MFHD ON BIB_TEXT.BIB_ID = BIB_MFHD.BIB_ID) ON
MFHD_MASTER.MFHD_ID = BIB_MFHD.MFHD_ID) ON BIB_MASTER.BIB_ID = BIB_TEXT.BIB_ID

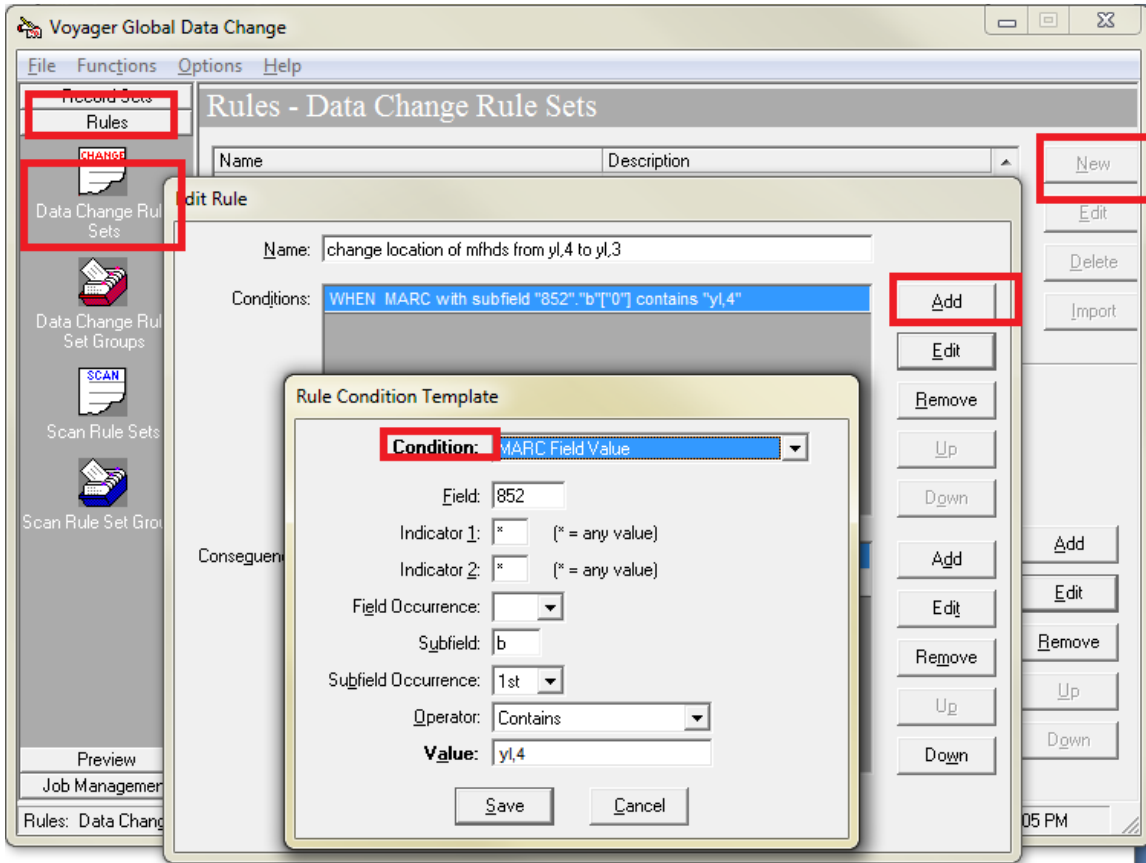
GROUP BY BIB_TEXT.BIB_ID, MFHD_MASTER.NORMALIZED_CALL_NO, MFHD_MASTER.DISPLAY_CALL_NO,
BIB_MASTER.SUPPRESS_IN_OPAC, BIB_TEXT.AUTHOR, BIB_TEXT.TITLE, BIB_TEXT.BIB_FORMAT,
BIB_TEXT.BEGIN_PUB_DATE, BIB_TEXT.END_PUB_DATE, LOCATION.LOCATION_CODE

HAVING (((MFHD_MASTER.DISPLAY_CALL_NO) Like "A*") AND ((LOCATION.LOCATION_CODE) Like "yl,4"));
```

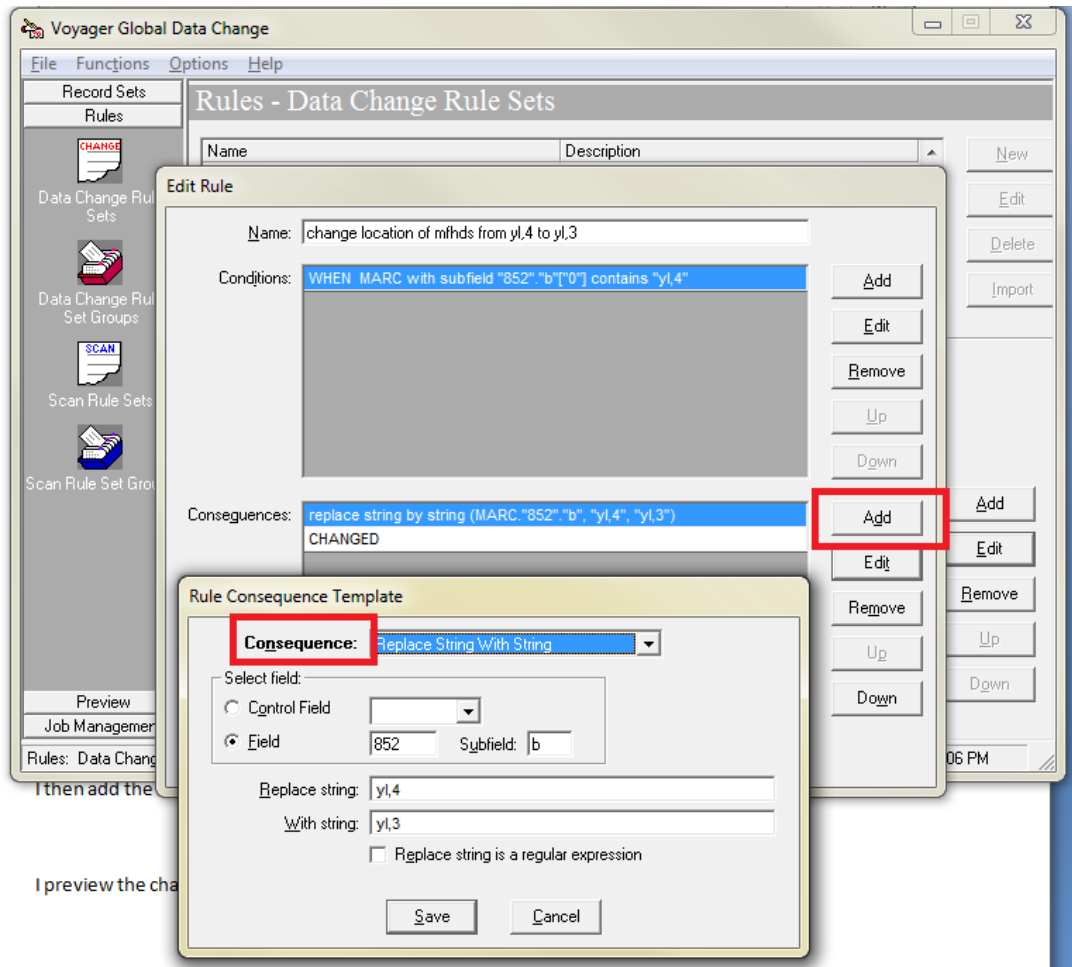
I de-dupe the list that Access gives me in Excel and then copy the column of MFHD ids into Notepad, and import this file into GDC:



GDC then wants you to apply a rule, so I created that by clicking “Rules” at the left, then “Data Change Rules” then “New”, give my rule a name, and click Add, then create the conditions for my set of MFHDs:



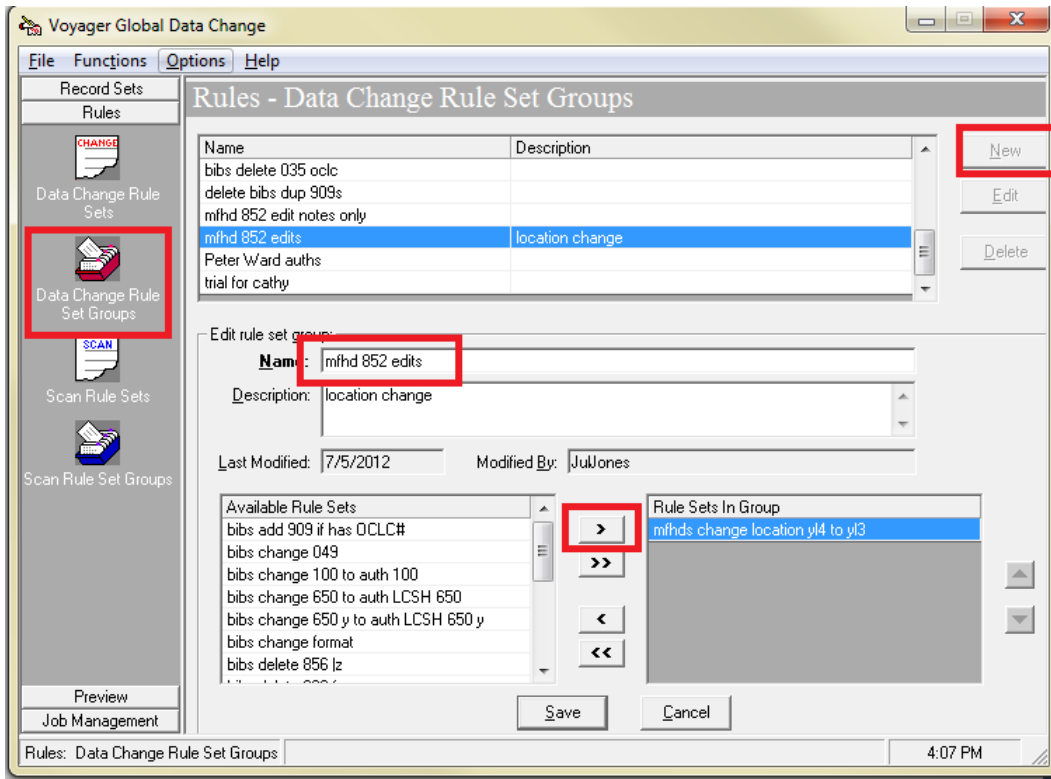
And the consequences to apply:



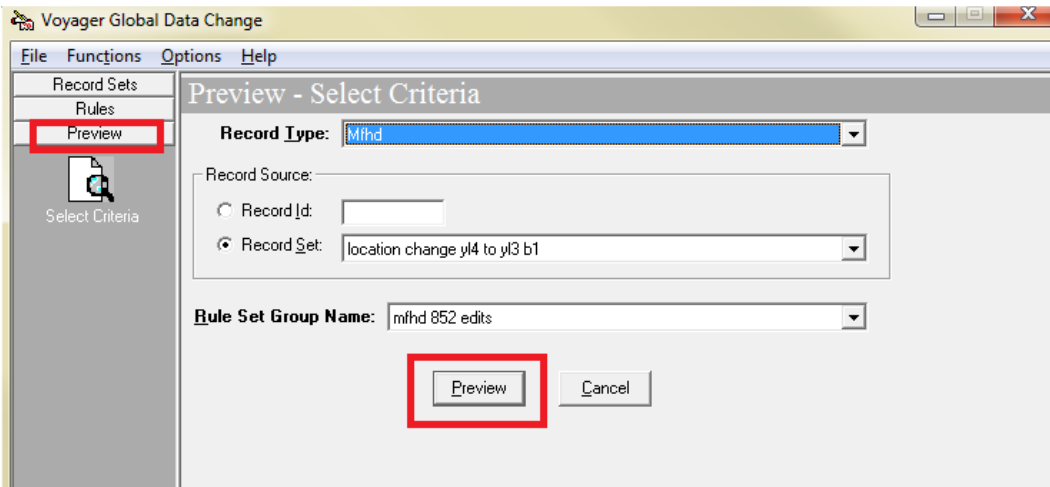
I then add the

I preview the cha

I then add the rule to the rule group:



I preview the changes:

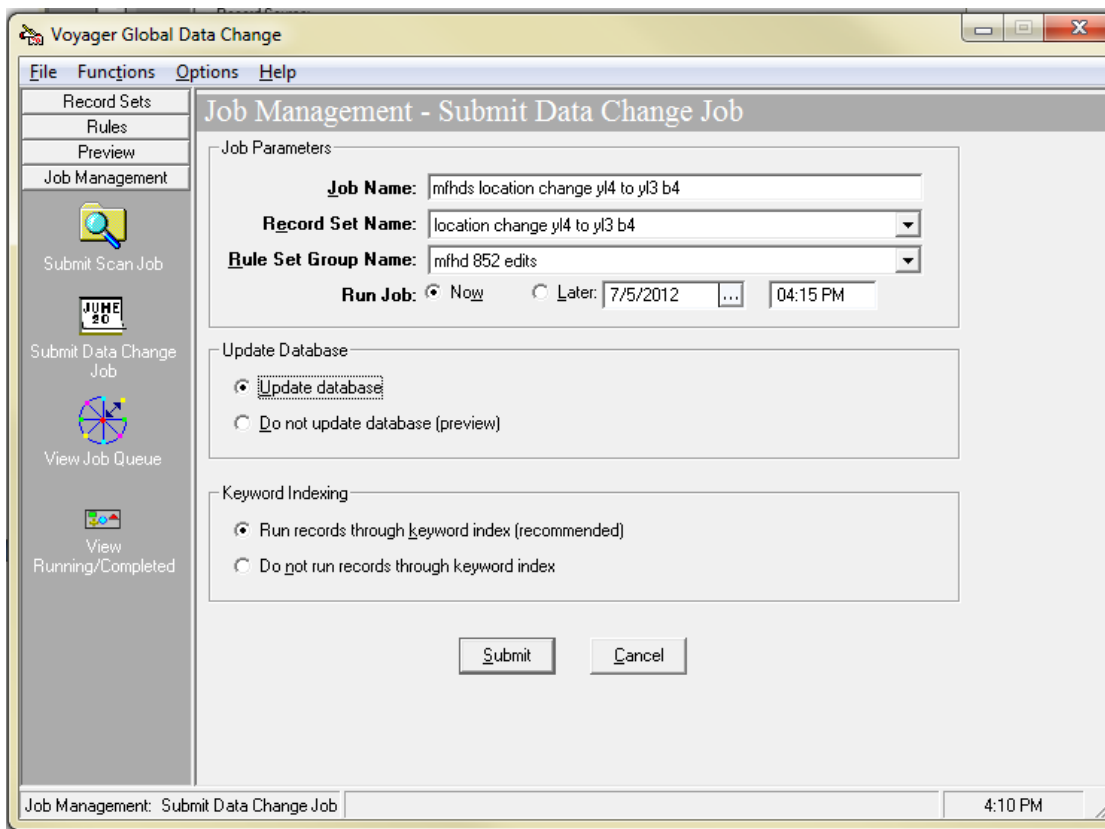


(Here's a preview of the actual changed record:)

The screenshot shows the 'Preview Record Set: location change y14 to y13 b3' window. The table displays the record before and after the rule is applied. The 852 field is highlighted in yellow.

Preview Record: Holdings 99825				Using Rule Set Group: mfnhd 852 edits				Record 1 of 9021							
Tag	Ind 1	Ind 2	Data (before rules applied)	Tag	Ind 1	Ind 2	Data (after rules applied)	Tag	Ind 1	Ind 2	Data (before rules applied)	Tag	Ind 1	Ind 2	Data (after rules applied)
000			00236cx a2200109z 4500	000			00236cx a2200109z 4500	000			00236cx a2200109z 4500	000			00236cx a2200109z 4500
001			99825	001			99825	001			99825	001			99825
004			93249	004			93249	004			93249	004			93249
005			20041005114050.0	005			20041005114050.0	005			20041005114050.0	005			20041005114050.0
008			0005082u 0 1001uu 0000000	008			0005082u 0 1001uu 0000000	008			0005082u 0 1001uu 0000000	008			0005082u 0 1001uu 0000000
014	1		⌘a AAL0922LM001	014	1		⌘a AAL0922LM001	014	1		⌘a AAL0922LM001	014	1		⌘a AAL0922LM001
014	0		⌘9 000062326	014	0		⌘9 000062326	014	0		⌘9 000062326	014	0		⌘9 000062326
852	0	0	⌘b y1,4 ⌘h B2430.M3764 ⌘i S36 1985b	852	0	0	⌘b y1,4 ⌘h B2430.M3764 ⌘i S36 1985b	852	0	0	⌘b y1,3 ⌘h B2430.M3764 ⌘i S36 1985b	852	0	0	⌘b y1,3 ⌘h B2430.M3764 ⌘i S36 1985b

And then I schedule the job.



It seems like these files (between 5,000 and 10,000 records per file) take about 20-45 minutes to run.

Next, to change the item's permanent location, I use Pick and Scan in Voyager Cataloging (under the file menu; P&S is also available in Circulation)

First, I get a list of barcodes from Access by adding the MFHD\_ITEM and ITEM\_BARCODE table to a query with the table of items at a location. I then take the barcodes Access gives me and save them to a .txt file to import into Pick and Scan.

The only thing I want to change is the permanent location, but if you want, you can change a lot of other things, too in "Item Options".

Pick And Scan

Item Options	Items
Holding Location: <input type="text" value="No Change"/>	Item Status: <input type="text" value="No Change"/> <input type="checkbox"/> Clear All
Permanent Location: <input type="text" value="Young Library 3"/>	Statistical Categories: <input type="text" value="No Change"/> <input type="checkbox"/> Clear All
Temporary Location: <input type="text" value="No Change"/>	<input type="checkbox"/> Delete Item
Permanent Type: <input type="text" value="No Change"/>	Suppress from OPAC:
Temporary Type: <input type="text" value="No Change"/>	Bib: <input type="text" value="No Change"/>
Media Type: <input type="text" value="No Change"/>	MFHD: <input type="text" value="No Change"/>
Self Check:	
Magnetic Media: <input type="text" value="No Change"/>	
Sensitize: <input type="text" value="No Change"/>	

Then, import the file in the "Items" tab, and click "Process" to run the file.

Pick And Scan

Item Options	Items
Barcode: <input type="text"/> <input checked="" type="checkbox"/>	Select File: <input type="text" value="USE BUTTON AT RIGHT TO SELECT FILE"/> ...
	<input type="button" value="Process File"/>
<input type="button" value="Print List"/> <input type="button" value="Save to File"/>	